

Caution

1. The product must be installed by professional technicians and power supply must be cut off before installation.
2. The diameter for AC input wire is 0.75mm² (complying with 60245 IEC57), which complies with the latest IEE electrical standards or national standards.
3. Do not touch the electronic circuit and its components.
4. Contact an authorised technical service centre for any repairs possibly required use only original spare parts.
5. The light source contained in this luminaire shall only be replaced by the manufacturer or his service agent or a similar qualified person.

OPERATING MANUAL

Dexit D339 - Bluetooth + Emergency

Important: Please read the instruction manual carefully prior to installation and keep it for future reference.



Order Code	Product Series	Power	Emergency Mode	Function Description
D339 6 BTEME-SS	Dexit D339	On-Mode Power:6W Emergency output Power:4W	Maintained	Bluetooth emergency, emergency within Bluetooth system

Specification with emergency unit

Battery: LiFePO₄, 6.4V, 3.4AH
Lumen: 180lm.
Batteries duration: 3 hours.
Battery charging period: 24 hours.
Battery design life: 4 years.
Max. battery operating temperature: 60
Min. battery operating temperature: 0
Discharge frequency: Once a year.

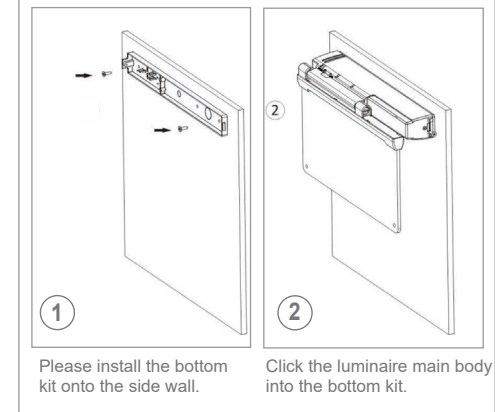
The replacement of the battery is needed when they no longer meet their rated duration of operation after the corresponding recharge period.

Accessories

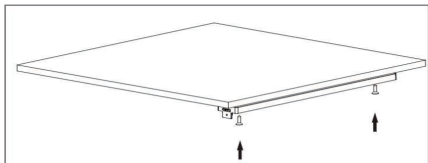
No.	Pic	Qty.	Usage
1		2	For fixing pictogram
2		2	
3		3	For ceiling / wall / suspending mounting
4		3	
5		2	
6		2	For ceiling / wall / suspending mounting
7		1	
8		2	For suspending mounting
9		2	
10		2	
11		2	
12		2	

Installation

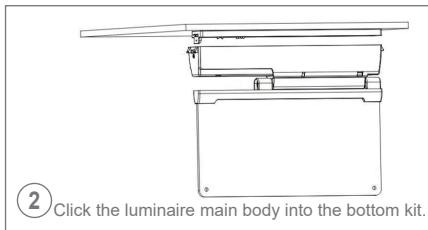
Wall Mounting



Ceiling Mounting

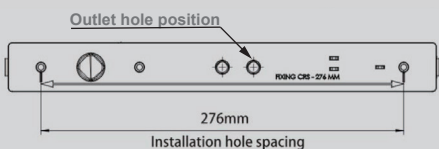


1 Please install the bottom kit onto the ceiling.

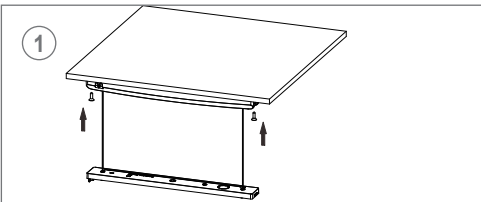


2 Click the luminaire main body into the bottom kit.

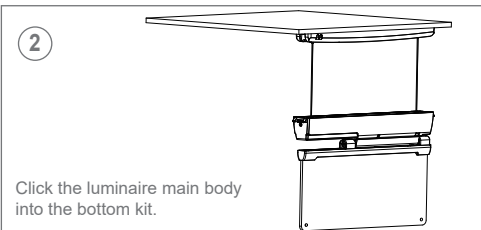
Ceiling Mounting Dimensions



Suspending Mounting

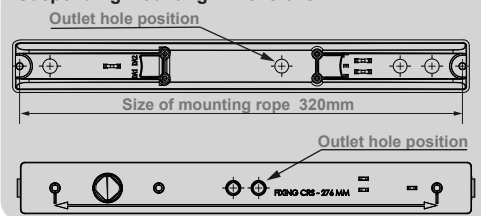


Use 2 steel cables to go through bottom kit and fix the cable on bottom kit, install the suspending bracket on the ceiling.



Click the luminaire main body into the bottom kit.

Suspending Mounting Dimensions



Function

1. Download free APP for set-up and commissioning.

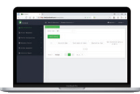
Bluetooth 5.0 SIG mesh



Smartphone app for both iOS & Android platform



Koolmesh Pro app for iPad

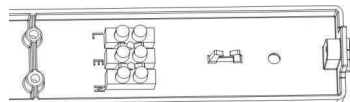


for Web

Web app/platform: www.iot.koolmesh.com

Wiring

- Turn the main power off before installation.
- Only licensed electricians are allowed to do the installation and wiring.
- Connect wires properly to the terminal at the bottom of the luminaire.



Test Function:

Normal Mode

It is the mode in which mains supply is available, with the battery charged or charging. In this mode, HBEM02 can be controlled by app to set emergency parameters.

Emergency Mode

It is the mode in which mains supply has failed and whilst the control gear is powered by the battery until deep discharge point. In this mode, HBEM02 is unable to be controlled by motion sensor, Push switch and app. However, some emergency parameters can still be configured via the app, such as time scheduled for self-test, duration for extended emergency mode etc.

Rest Mode

It is the mode in which the luminaire is intentionally off whilst the control gear is powered by the battery. To enter this mode, the prerequisite is that there is no mains supply. In this mode, the luminaire will be turned off automatically and HBEM02 is powered by the battery. If the luminaire is forced to turn on in this mode, HBEM02 will then be adjusted to emergency mode. When mains supply is recovered, HBEM02 will return to normal mode.

Inhibit Mode

It is the mode in which HBEM02 is powered from the mains but prevented from going into emergency mode in the event of mains failure. Please enter this mode only in special applications whereby emergency function is not needed, such as when electrician needs to cut off power supply when doing examination and maintenance work for HBEM02.

Extended Emergency Mode

It is the mode in which the control gear continues to operate the lamp in the same way as in emergency mode for the programmed prolong time after the restoration of the mains supply. When this mode is enabled, HBEM02 will remain in emergency mode even when mains supply is recovered. In this mode, the user has to set the time extended for emergency mode; when the time extended elapses, HBEM02 will then return to normal mode.

Self test (Monthly)

HBEM02 carries out routine test on emergency lighting based on pre-programmed time via the app or after receiving manual commands from the app. During the self test process, tests for load connections (such as open circuit, short-circuit) and battery connections (such as open circuit, short-circuit, polarity reversal etc.) will be carried out.

Self test (Annually)

The test is carried out mainly to check the battery level. The user has to make sure that the battery for HBEM02 is fully charged before HBEM02 carries out annual test or annual test. Also, the battery lifetime statistics will be analysed and displayed on a chart basis.

LED Diagnostics

Indicator Colour	Status	Meaning
GREEN SOLID	Device OK	All OK, AC power is present. Battery is connected & charging
GREEN FAST FLASH (0.1s ON, 0.1s OFF)	Monthly test/Functionality test	AC power is present. Monthly test in progress
GREEN VERY SLOW FLASH (1s ON, 1s OFF)	Annual test/Duration test	Annual test are being carried out
RED SOLID	Emergency LED fault	Emergency LED is open circuit, short circuit or has otherwise failed in some way. Fault can indicate the live status or the result of a test
RED SLOW FLASH (1s ON, 1s OFF)	Battery fault	Battery failure (Battery failed the duration or functional test, battery appears to be defective, battery has incorrect voltage).
RED/GREEN OFF	No power available	AC power is lost, unit in emergency mode

*If you want to see the diagnostic report, please go to the APP or web platform to see the full report and analysis